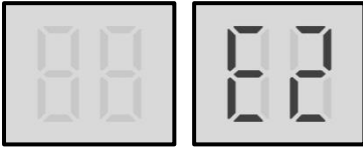


E2 Troubleshooting

1 Digital display output



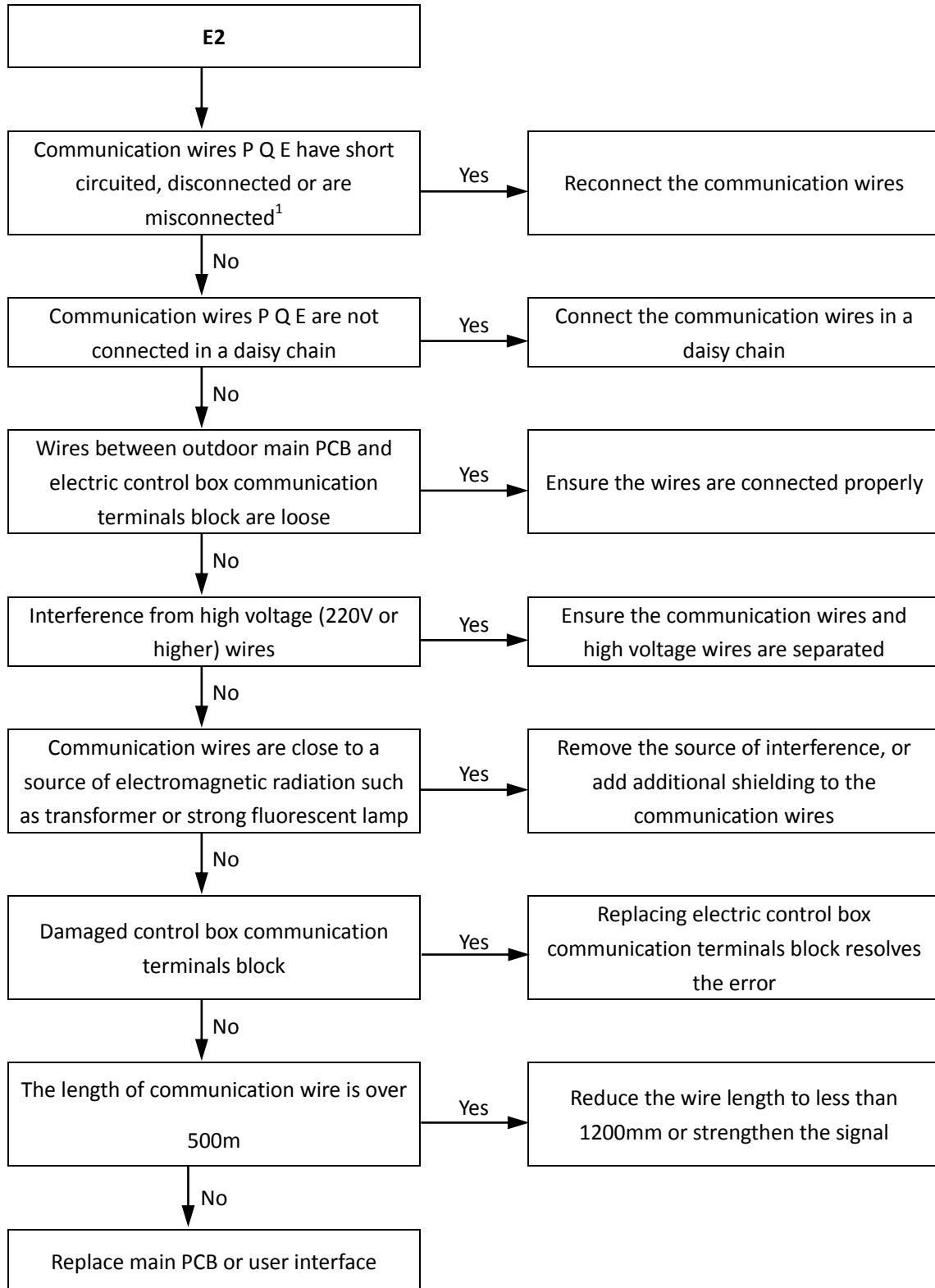
2 Description

- Communication error between outdoor unit and user interface.
- All units stop running.
- Error code is displayed on main PCB and user interface.

3 Possible causes

- Communication wires between outdoor unit and user interface are not connected properly.
- Communication wiring P Q E terminals misconnected.
- Loosened wiring within electric control box.
- Interference from high voltage wires or other sources of electromagnetic radiation.
- Communication wire is too long.
- Damaged main PCB, user interface or electric control box communication terminals block.

4. Procedure



Notes:

1. Measure the resistance among P, Q and E. The normal resistance between P and Q is 120Ω, between P and E is infinite, between Q and E is infinite. Communication wiring has polarity. Ensure that the P wire is connected to P terminals and the Q wire is connected to Q terminals.