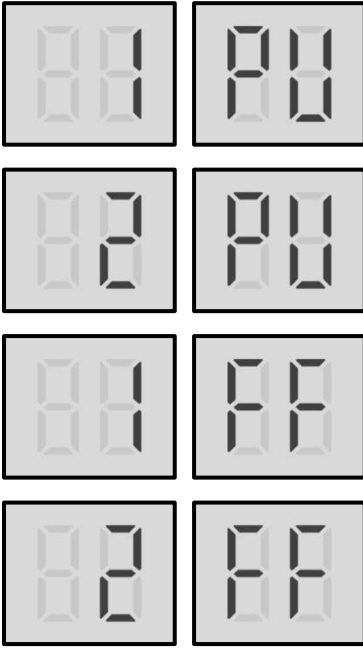


PU/FF Troubleshooting

1 Digital display output



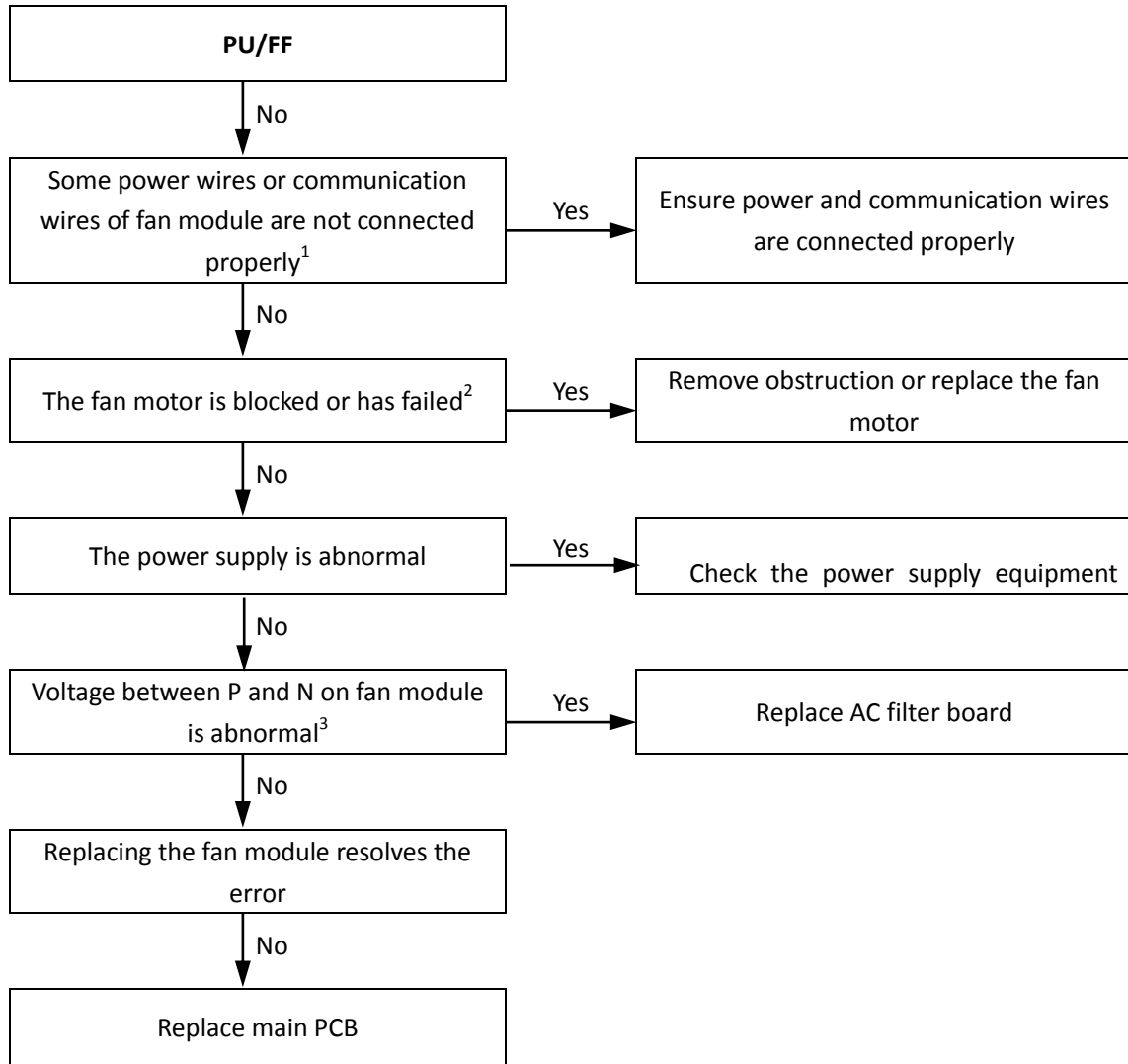
2 Description

- 1PU/FF indicates fan module A protection.
- 2PU /FF indicates fan module B protection.
- When PU error occurs 10 times in 120 minutes, FF will display, a manual system restart is required before the system can resume operation.
- All units stop running.
- Error code is only displayed on the main PCB and user interface.

3 Possible causes

- Switch SW1 incorrectly set.
- Power or communication wires not connected properly.
- Fan motor blocked or has failed.
- Power supply abnormal.
- AC filter board damaged.
- Fan module damaged.
- Inverter module PCB damaged.

4 Procedure



Notes:

1. Refer to "Outdoor Unit Electric Control Box Layout".
2. Refer to "Layout of Functional Components".
3. The normal voltage between P and N on the fan module is 310~340V DC. Refer to "Outdoor Unit Electric Control Box Layout" and "Fan module power board".